

AIR-SUSPENSION

Dunlop Systems and Components
Het Wegdam 22
7496 CA Hengevelde
The Netherlands
Tel.: +31-547-333065
Fax: +31-547-333068
Website: www.dunlopsystems.com

Auxiliary Air Suspension

Art. nr.: L.HI.L2.3.C.M

Designed for:
Toyota Landcruiser HZJ
Leaf springs



From: 1993 & UP

1. Introduction

This air suspension kit has been especially developed for the Toyota Landcruiser HZJ. To ensure the correct installation of the air suspension, we strongly recommend to read these instructions thoroughly before commencing any installation work. All components are supplied with bolts, washers and nuts. The installation should only be carried out by a suitably qualified mechanic/ installation company. A proper installation always remains the responsibility of the installer. We will not accept responsibility for faults or defects arising from incorrect installation and such action will render the guarantee void.

Do not forget to send a copy of the complete filled out manufacturers declaration by post, fax or e-mail to Dunlop Systems and Components, after installing this kit. Signed by a qualified installer.

Artikel number:

L.HI.L2.3.C.M - Auxiliary air suspension

Index

1. Introduction	2.
2. Installation of brackets and air bellows	3.
3. Connecting air hose to;	
•Valves (standard)	
•Valves and gauges (optional)	3.
4. Operation	4.
5. Maintenance	4.
6. Completion	5.
7. Installation pictures	6.

2. Installation of brackets and air bellows.

Ensure you have enough space between chassis and the rear axle to provide the installation. If needed use a jack. Install one side first, to avoid mistakes.

Think of your safety first !! Always use axle struts!!!

Preparing the vehicle .

Loosen the U-bolts and remove the bump stops. If necessary lift the back of the vehicle to provide more room for installing the air spring assemblies (see pictures 1 and 2). Remove the original axle deairing plug and install the special plug (see pictures 3 and 4). Reposition the brake dividing point with a self made strap (see pictures 5 and 6).

Installing the bottom bracket to the axle.

The bottom bracket shifts between the rear axle and the leaf springs. Tighten the U-bolts till the bracket can still shift with a minor backlash. (see pictures 7 and 8).

Installing the air bellow .

Connect the air tube to the air bellow. Black is left and blue is right. Then mount the top bracket to chassis with the counter sunk bolts (see picture 9). Connect the air bellow to the top plate (M8 x 16 with washers) Don't tighten the bolts (see pictures 10 and 11). Then connect the air bellow to the bottom bracket. Also don't tighten these bolts. (see pictures 12 and 13)

Securing the air springs.

Bring the vehicle to it's ride level. Align the air spring and than tighten all bolts (see picture 14).

3. Connecting air hose to;

- **Valves (standard)**

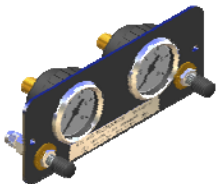
Attach the valves to properly protected and solid but accessible place.
Some examples:



- At the rear on the bumper
- At the rear beside the license plate
- On the side just before a rear wheel on the chassis
- Beside the fuel cap
- Or any other place you prefer

- **Valves and gauges (optional)**

Attach the panel to properly protected and solid but accessible place.
Some examples:



- In the cabin within reach and sight of the driver
- Or any other dry place you prefer

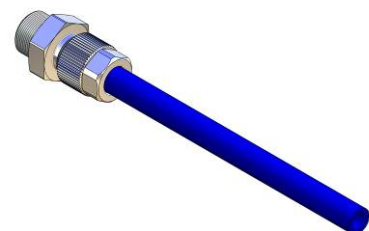
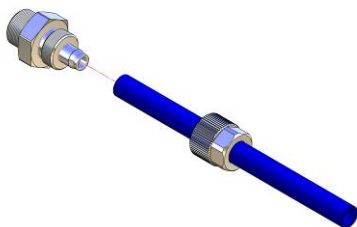
Bring the air tubes to the valves (check; left is black, right is blue) and connect them. Ensure tightened by hand and then 1 total turn is o.k..

Note;

- *Avoid too tight ty-raps, air hose must stay easily to shift at a ty-rap connection point.*
- *To shorten air tube; cut it straight*

Keep the air tubes away from:

- heat of the exhaust
- debris of dirt & splatter



- obstacles like branches, etc.
- sharp-edges

4. Operation

With a normal tire pump you can check the pressure in the tires. The rear of the vehicle should be a little higher than the front.

Important - minimal pressure **0.5 bar.**
 - maximal pressure **7.0 bar.**

5. Maintenance

After installing, Spray body wax on the steel parts. The air suspension kit does not need much service. Check ones in a while the pressure of the air bellows. If you wash your car also clean your air bellows by spraying off the dirt & debris.

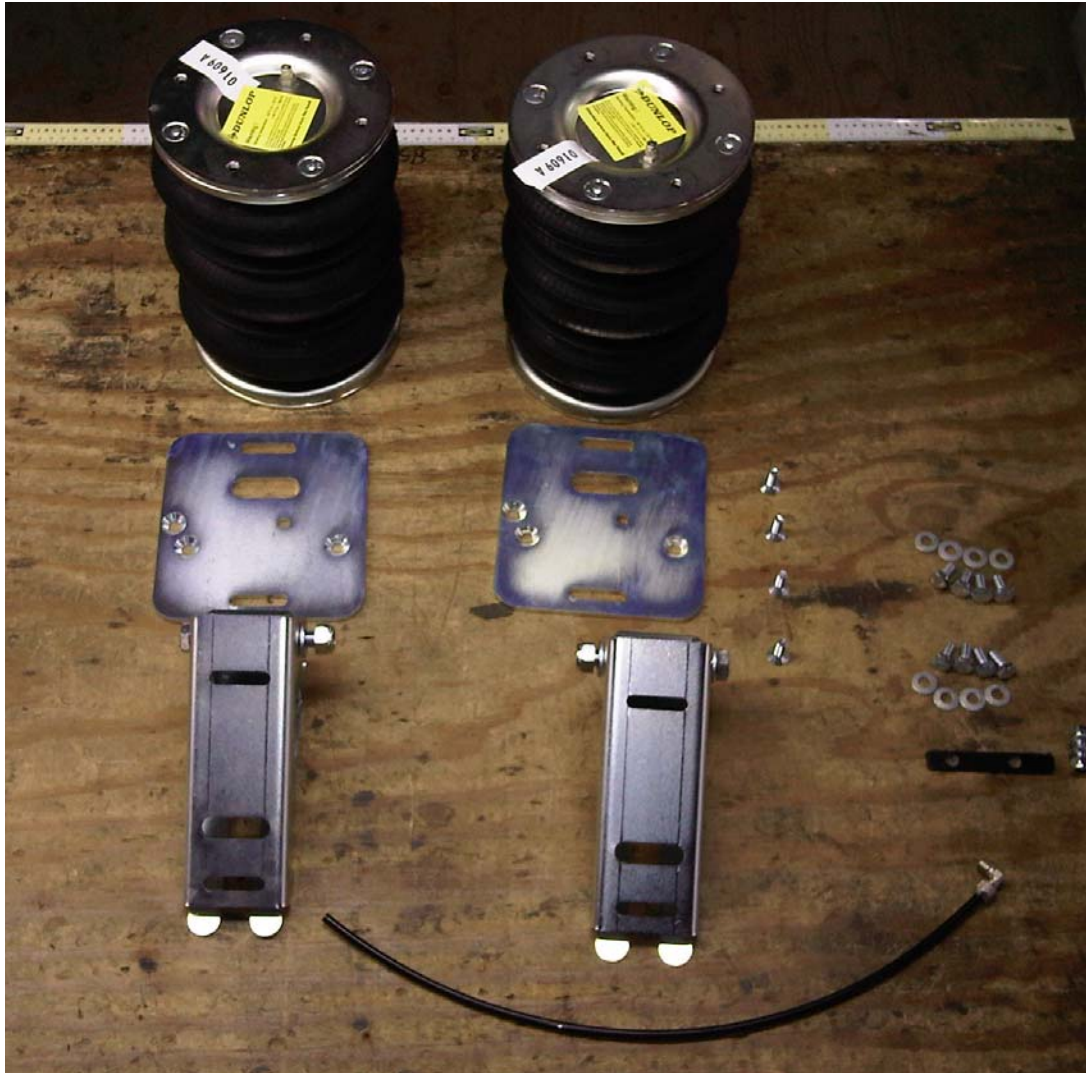
6. Completion

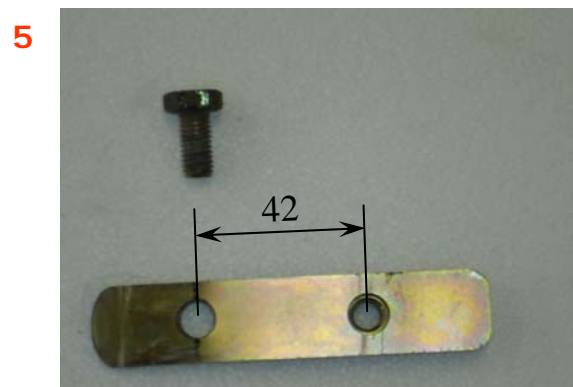
Dunlop Systems and Components wishes you a lot of pleasure with our air suspension kit. Ensure proper functioning of our air suspension, we advise to (let) check/ control the system by qualified personnel frequently. It is important to spray all the steel parts with body wax.

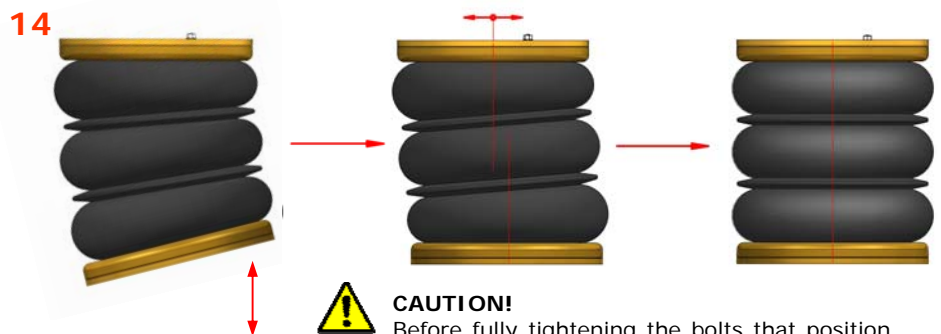
Do not forget to send a copy of the complete filled out manufacturers declaration by post, fax or e-mail to Dunlop Systems and Components, after installing this kit. Signed by a qualified installer.

Modifications to the system are only allowed to be done by Dunlop systems and Components. For questions you can always call Dunlop Systems and Components.
Tel. 0031 (0) 547-333065.

1







CAUTION!

Before fully tightening the bolts that position the air bellows, ensure that the bellows are correctly aligned.